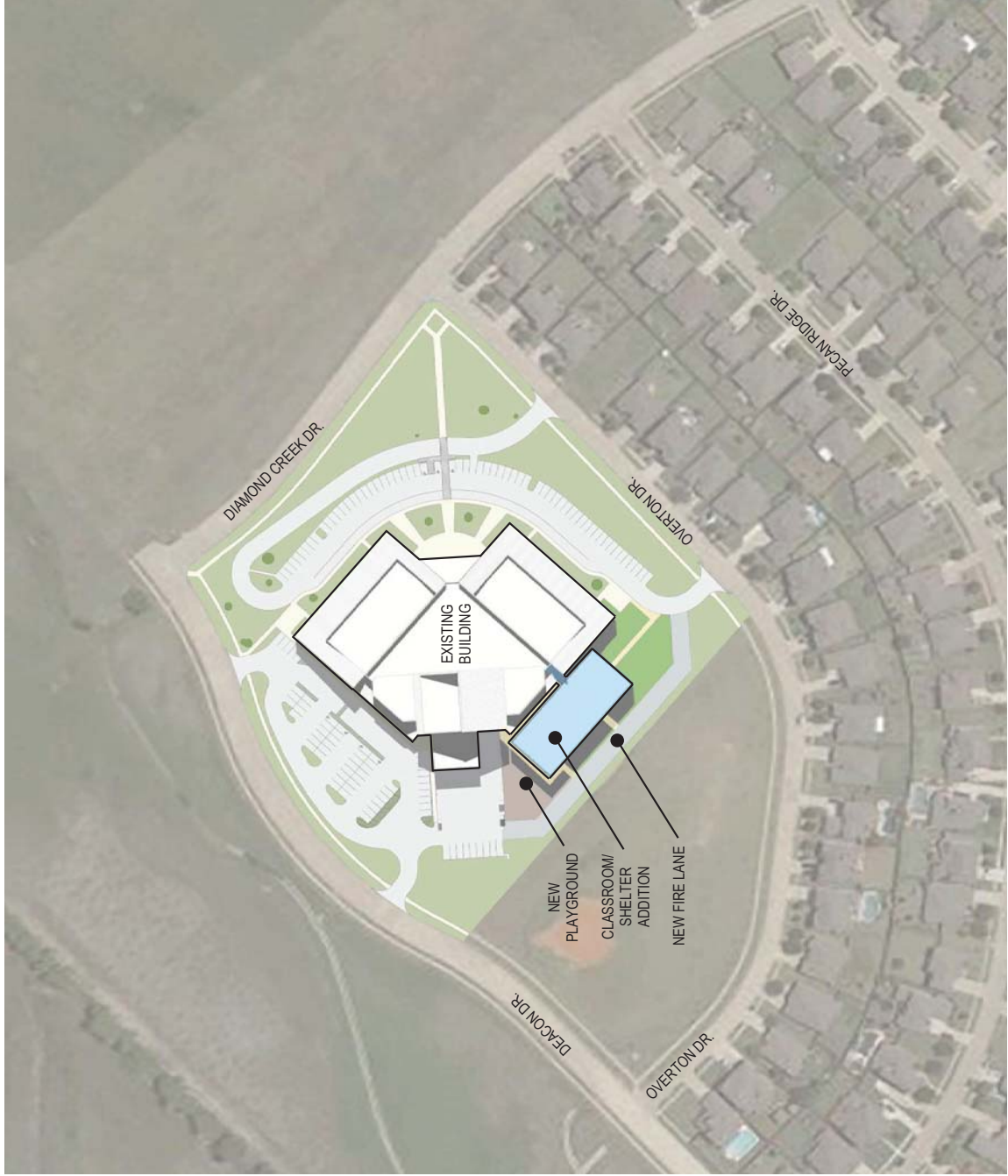


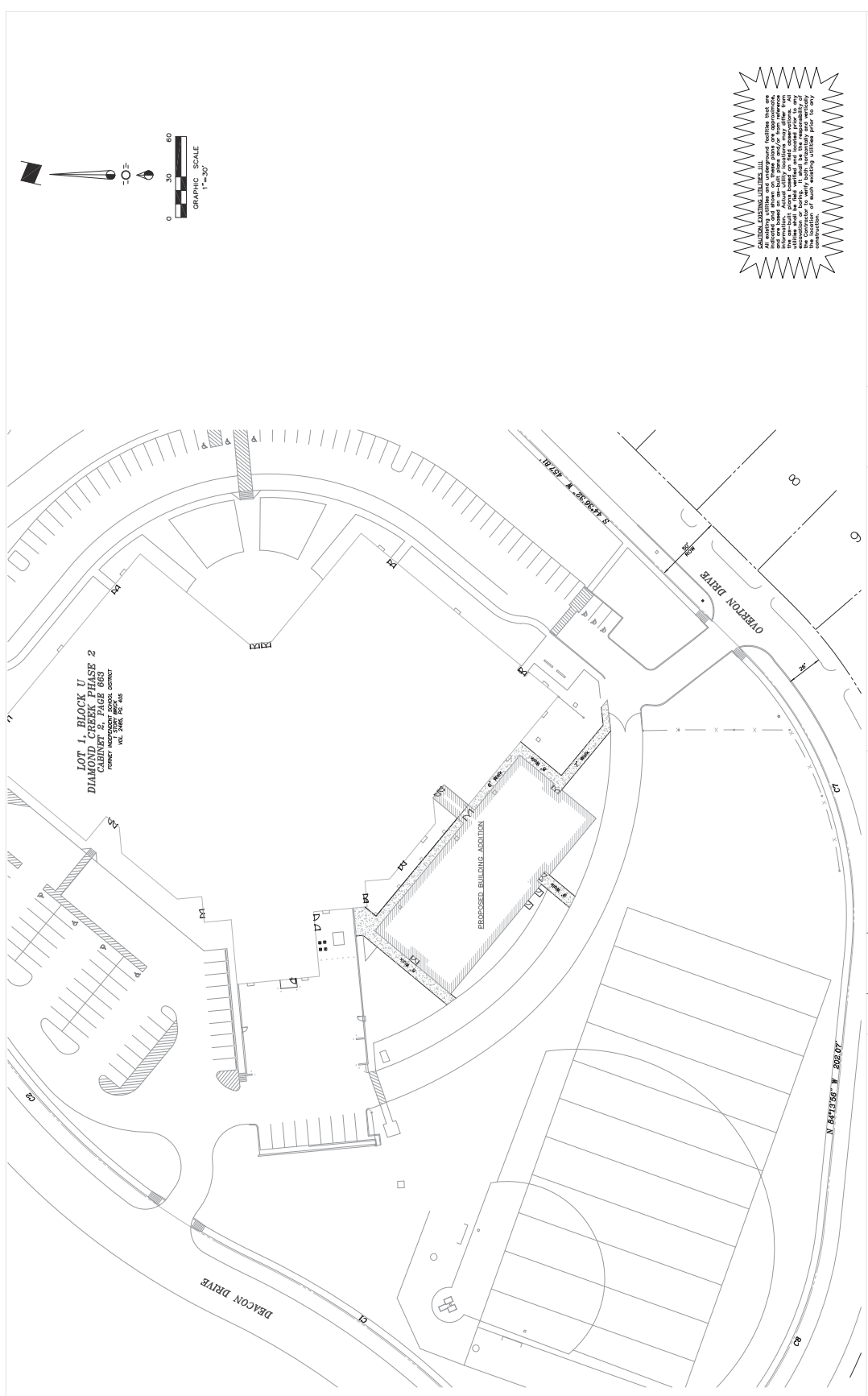
COLOR LEGEND

- New Pavement/Roads
- New Sidewalks
- Grass
- New Addition
- New Playground Location
- Existing Construction



CROSBY ES SITE PLAN





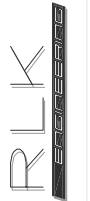
WARNING: THIS PLAN IS A DRAFT AND IS NOT TO BE USED FOR CONSTRUCTION. ANY CHANGES TO THIS PLAN MUST BE APPROVED BY THE ARCHITECT. THE ARCHITECT ASSUMES NO LIABILITY FOR ANY DAMAGE OR INJURY RESULTING FROM THE USE OF THIS PLAN.

REVISION	DATE	DESCRIPTION

NOTE: Prior to beginning any construction or installation, the contractor shall verify the location and elevation of all existing utilities and structures. The contractor shall be responsible for obtaining all necessary permits and approvals from the appropriate authorities. The contractor shall maintain access to all existing utilities and structures throughout the construction process.

MISC. INFORMATION: SITE BENCHMARKS:
 1. 111 West Main St. (972) 559-1333 Fax (972) 559-1333 Fax
 2. 111 West Main St. (972) 559-1333 Fax (972) 559-1333 Fax
 3. 111 West Main St. (972) 559-1333 Fax (972) 559-1333 Fax

RLK ENGINEERING, INC.
111 West Main
Arlington, TX 76010
(972) 559-1333 Fax
(972) 559-1333 Fax
Texas Registration No. 279



CROSBY ELEMENTARY SCHOOL EXPANSION
FORNEY, TEXAS
2495 DIAMOND CREEK DRIVE, FORNEY, TEXAS
PROJECT NO. 2495-18
DATE: 05/14/2018

SP-1

--	--

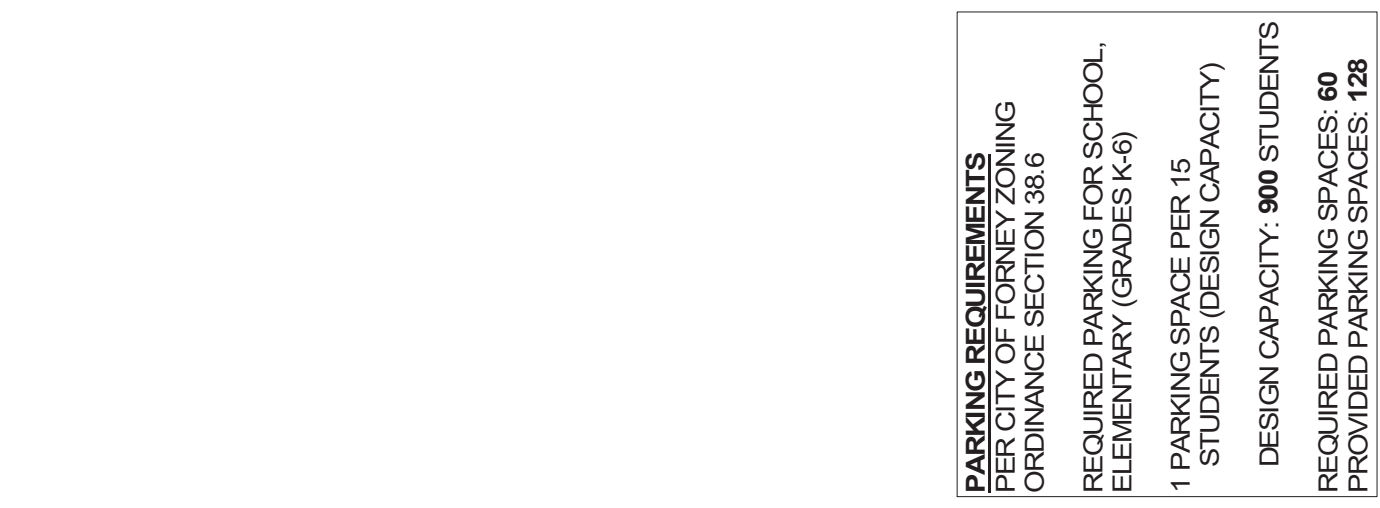
--	--

CROSBY E.S. ADDITION & RENOVATION
 FOR
 FORNEY I.S.D.
 FORNEY, TEXAS 75126

--	--



ARCHITECTURAL SHEET PLAN	VOLUME
PACKAGE	SHEET NO.
DATE	



PARKING REQUIREMENTS
 PER CITY OF FORNEY ZONING
 ORDINANCE SECTION 38.6

**REQUIRED PARKING FOR SCHOOL,
 ELEMENTARY (GRADES K-6)**

**1 PARKING SPACE PER 15
 STUDENTS (DESIGN CAPACITY)**

DESIGN CAPACITY: 900 STUDENTS

REQUIRED PARKING SPACES: 60

PROVIDED PARKING SPACES: 128

